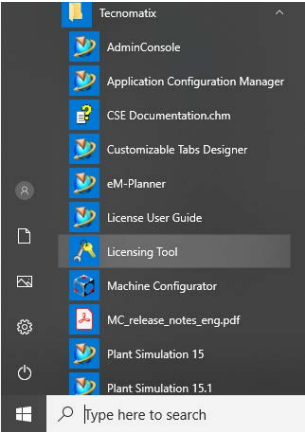


# Tecnomatix Licence Borrowing

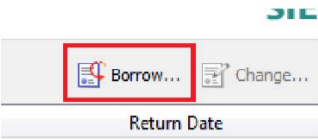
The Tecnomatix licence borrow utility allows a user to borrow a licence from the server for up to 120 days. The client machine can disconnect from the server for this period and work independently. Current products which support the borrow process are Process Simulate, Process Designer, Plant Simulation and the latest version of RobCAD

- 1. Connect the client machine to the network and confirm that the Tecnomatix product launches without issue.
- 2. Close the software
- 3. Launch the licencing Tool

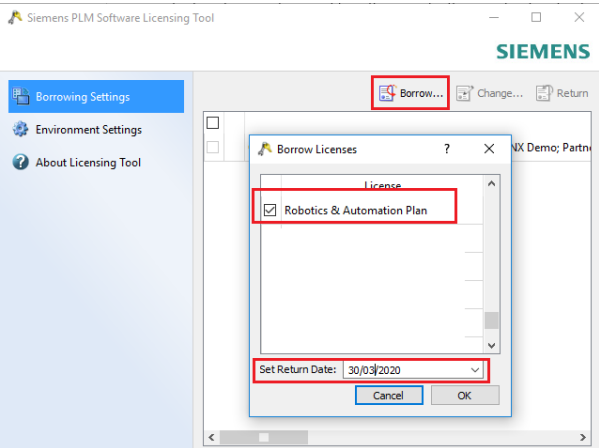
Start->All Programs->Tecnomatix->Licencing Tool



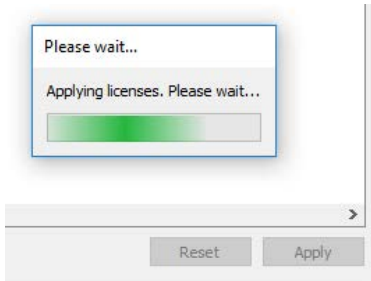
- 4. Select the **Borrow** button.



- 5. Select the product and a return date.

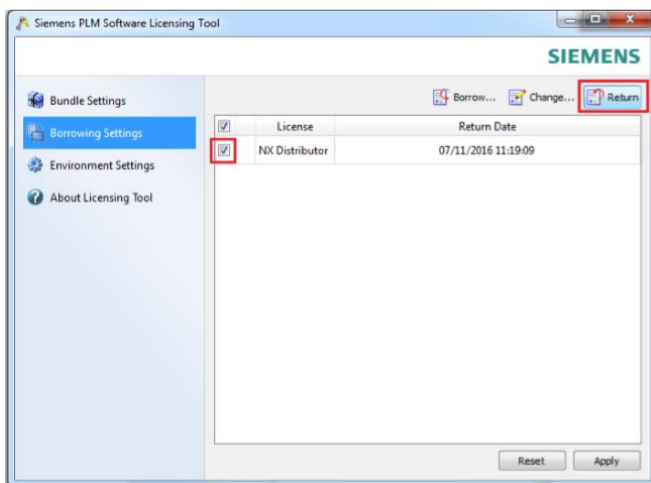


7. Check the settings and **Apply** the borrow mechanism.



8. Disconnect from the network and attempt to the Tecnomatix product

9. You can return the licence earlier if required by connecting to the network and select the option to return.



Alternatively, the licence will expire from the client at the given time and will return to the server.

Please note: The user who borrows the licences must be the user who intends to use the software. (The user's registry keys are populated with a licence code).