



Solid Edge Licensing Guide

2020 Re-Assigning Your Node Locke License



- 1. Introduction.....3
- 2. Prerequisites.....3
- 3. Guide Contents.....4
- 4. Contact OnePLM9
 - 4.1. Technical Support – Contact Details.....9
 - 4.2. Sales – Contact Details.....9



1. Introduction

This purpose of this guide is to assist you in reassigning your Node Locked license.

If you have recently changed hardware, or your license has invalidated in some way, you will need to reassign your node locked license again to the new details.

Node locked licenses are assigned to the COMPOSITE2 code in Solid Edge, and this code is generated based upon multiple factors can change this code, including:

- Computer Hostname.
- Active MAC address (change of network card).
- Hard drive serial number (change of hard drive).

If you require urgent access to Solid Edge and you are in maintenance, we can usually generate an emergency license file for you to get you up and running. Refer to Section 4 of this document to contact OnePLM support and we can assist you.

2. Prerequisites

Below is a list of prerequisites for this guide:

- A full Solid Edge license.
- A valid maintenance contract.
- Solid Edge 2020 software installed on your machine.
- Siemens WebKey account access (see below)
- Internet access.

This guide assumes you, or someone at your organisation, has access to a Siemens WebKey account.

If you do not have a Siemens WebKey account or do not have access, please refer to our guide on how to set up WebKey access.

Please note that the content of this guide is written for Solid Edge 2020 only, although the process is very similar to previous versions.

3. Guide Contents

1. Firstly, with Solid Edge installed, launch License Utility from the Windows Start menu.

You will find this under 'Solid Edge ##### → License Utility'.

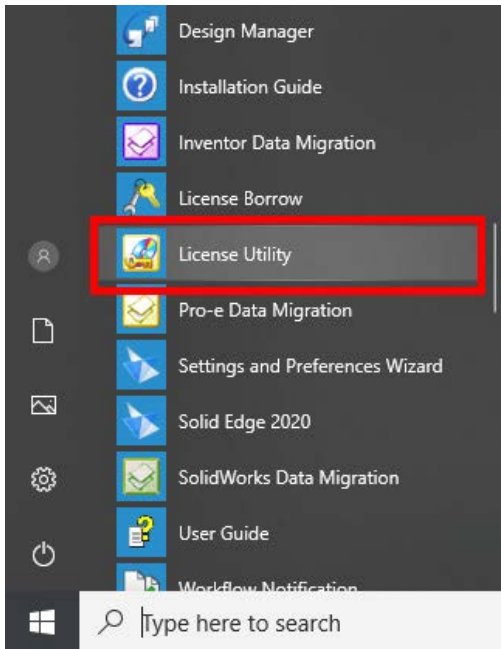


Figure 1 - Example of Windows Start menu, showing the license utility application icon.

2. The License Utility application should launch, displaying a dialog akin to the one below.

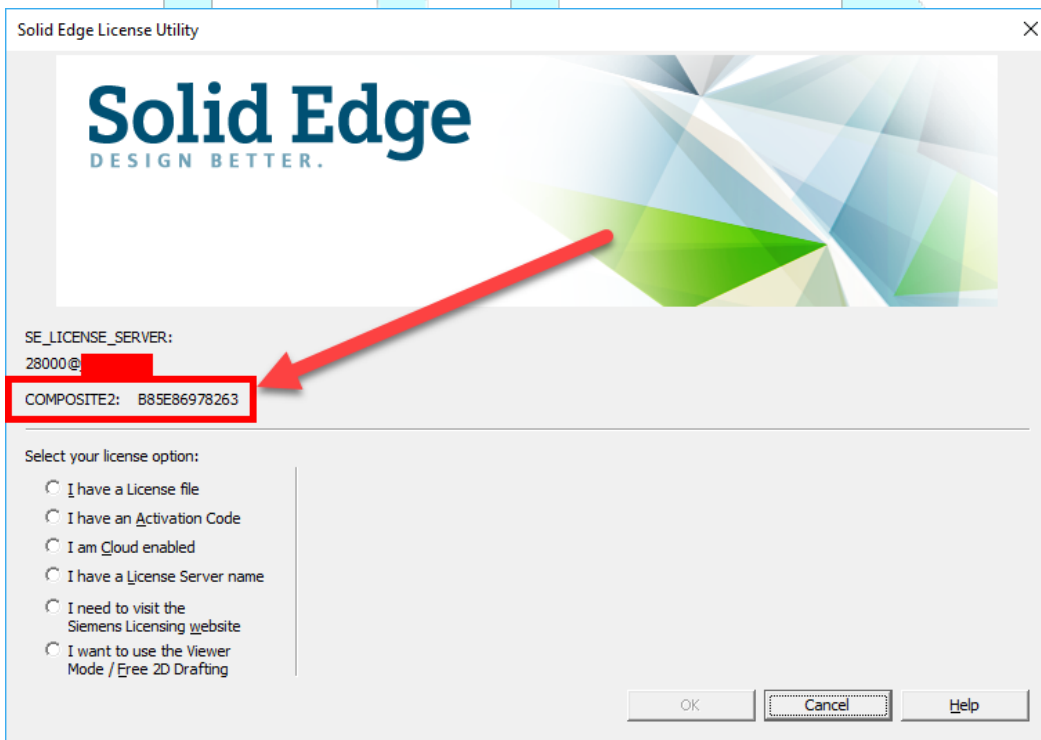


Figure 2 - Screenshot of the Solid Edge License Utility application.

3. On this dialog, you should see a label for 'COMPOSITE' with a corresponding 12-character code.

Make a note of this code, as you will need it later.

The text is selectable, we recommend copying the code to the clipboard and pasting it somewhere for later.

Please note that this code is based upon several elements of your hardware, such as your MAC address, hard-drive serial number and computer hostname. If any of these factors change, this code will change, and your license will invalidate.

4. Visit the Siemens WebKey login site, or click the link [here](#), and login with your details.

If you do not have a WebKey account, please refer to the prerequisites section of this guide on how to obtain one.

5. Upon logging in, this should take you to your WebKey homepage. Click **Product Activation**.

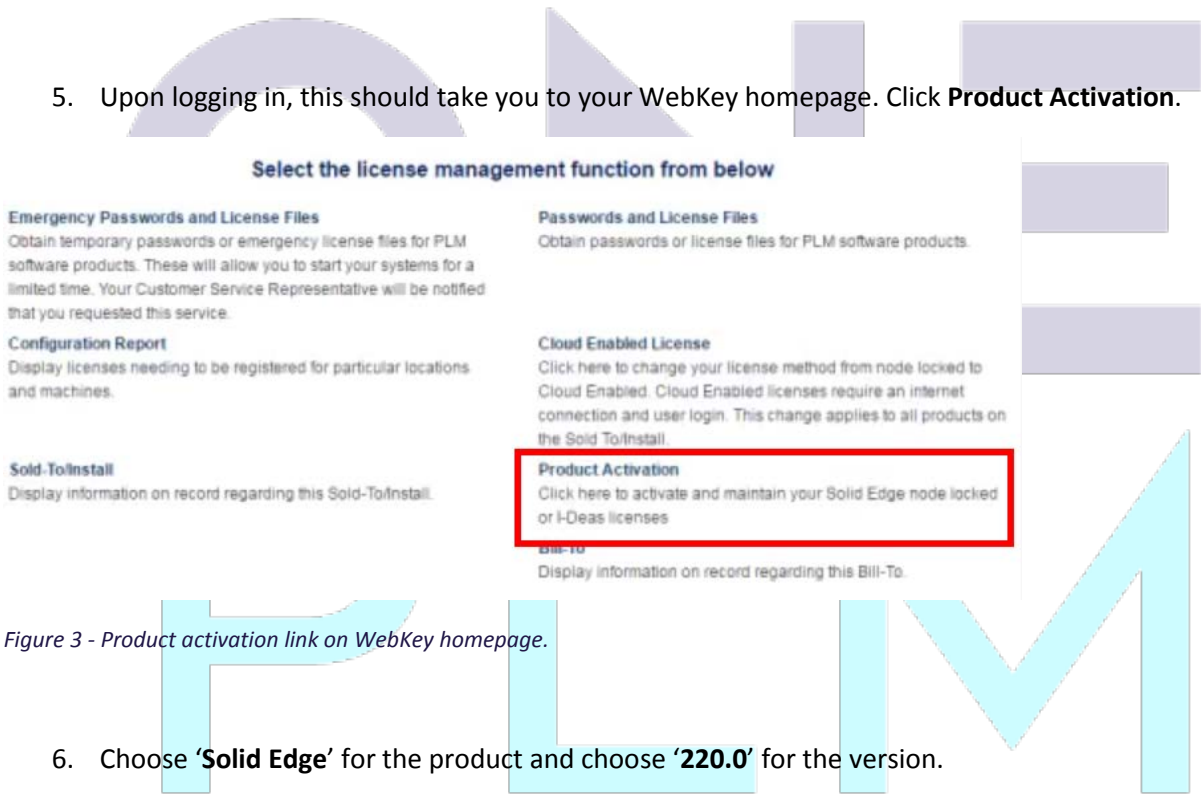


Figure 3 - Product activation link on WebKey homepage.

6. Choose 'Solid Edge' for the product and choose '220.0' for the version.



Figure 4 - Product activation page: choose a product.

7. Click 'Create New Machine'.

Product Activation

Step 1 : Click Create New Machine to activate a machine and assign products to it.

Step 2 : Click Generate License File to obtain your license after you have activated your machine(s). This license file will work on any one of the machines you have activated.

Step 3 : To edit the licensing of an existing machine click on the machine name.

Unassigned license(s):

ID	Lang	Description	Maintenance Expiration	License Type	Users
SE289	ENG	Solid Edge Classic Node Lock	31/10/2017	Extended	00000001

Figure 5 - Product activation page: license summary.

8. Enter the following information into the fields that you are prompted for.

“Machine Name” – an identifiable name of the machine you are locking the license to.

“SE CID” – the ‘COMPOSITE2’ address we captured earlier from license utility (step 3).

Product Activation

Step 1: Enter the name of machine you want to activate. The machine name is used to identify this machine later should you want to edit it. Enter a name that is memorable and identifies the machine at your site.

Step 2: Enter the disk serial number (volume id) without the dash of the machine. The disk serial number is shown in the upper right corner of the Solid Edge License Utility delivered with Solid Edge. It is also shown as the Volume Serial Number if you run the vol c: command from a command prompt window.

Step 3: Click Create to create the machine.

Step 4: Click Assign Products to add products to the new machine.

Note The Solid Edge Composite ID (SE CID) is required for ST4 license files. If you are connected using the machine you are activating you can click Get Number to retrieve your SE CID value. To obtain the value manually download and run the SE CID utility on the machine you are activating. The utility can be downloaded from the Siemens PLM FTP Server

Machine Name:*

SE-CID:*

*Required field

Figure 6 - Product activation page: create new machine.

9. Choose 'Create' to create the machine.

10. Choose 'Assign Products' to continue and assign a license to the machine.

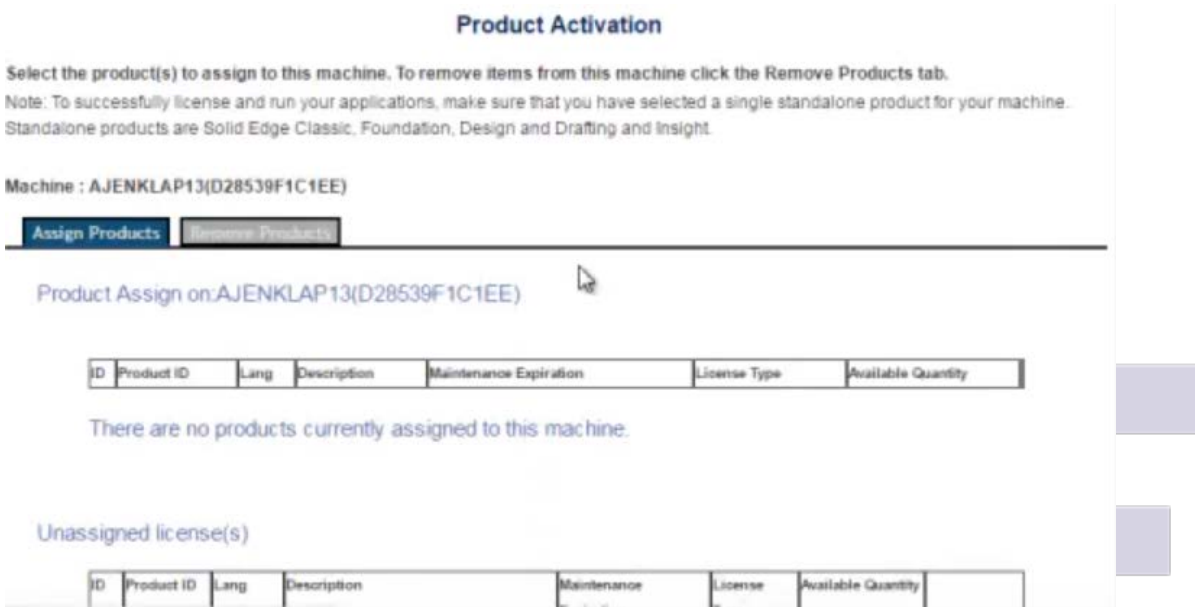


Figure 7 - Product activation page: assign and remove products.

11. Select the 'Remove Products' tab on this page and remove a license from an existing machine.

Make sure, if you have multiple licenses, to select the machine that is no longer using the license.

12. Choose the 'Assign Products' tab again.

You should now see the license you removed appear under 'unassigned license(s)'.

13. Click 'Assign' next to the unassigned license and click 'Finish'.

The license will now be assigned to the new machine.

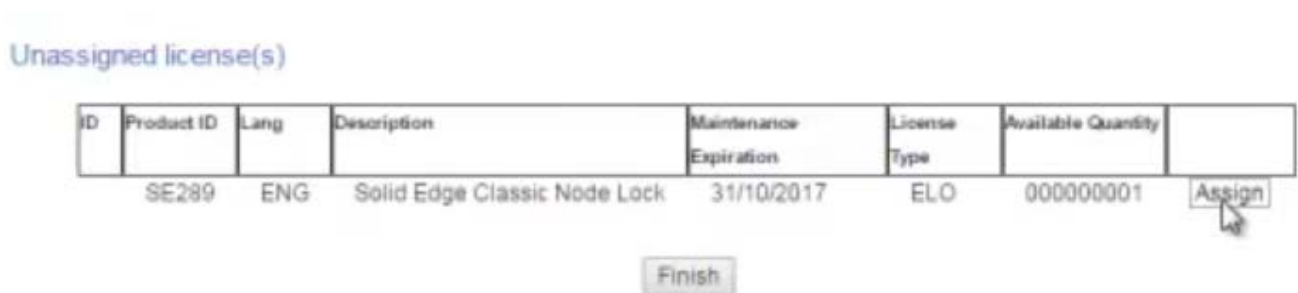


Figure 8 - Product activation page: assign license.

14. Click the 'Generate License File' button to generate the new license file.

This will trigger a download in your browser containing the license file.



Figure 9 - Product activation page: summary page, generate license file.

15. Launch License Utility again (follow steps 1 & 2 again if you are not sure).

16. Choose 'I have a license file' and browse to the license file.

17. Launch Solid Edge.

Solid Edge should launch if the license has been correctly assigned and set.

If you have any issues, please refer to our contact details on Section 4 of this guide.

4. Contact OnePLM

Have a question or need technical support? No problem, our team of technical experts are on hand. Please include as many details as possible so that we can assist you.

4.1. Technical Support – Contact Details

For technical enquiries, please contact our helpdesk through one of the following methods:

Email: Support@OnePLM.com

Tel: [01865 954 301](tel:01865954301)

Website: OnePLM.com/Contact

4.2. Sales – Contact Details

For sales enquiries, please contact us through one of the following methods:

Email: Sales@OnePLM.com

Tel: [01865 954 300](tel:01865954300)

Website: OnePLM.com/Contact



Revision History

Rev	Author	Date	Notes
1	JSTA	19/03/2020	First release