



# Solid Edge Licensing Guide

2020 Home-Use Licensing



- 1. Introduction.....3
- 2. Prerequisites.....3
- 3. Guide Contents.....4
- 4. Contact OnePLM .....7
  - 4.1. Technical Support – Contact Details.....7
  - 4.2. Sales – Contact Details.....7



## 1. Introduction

This purpose of this guide is to assist you in setting up your Solid Edge home-use license.

The Solid Edge home-use license is valid for 6 months from the date of issue, and you are entitled to 1 home-use per-license of Solid Edge in maintenance on your account. The license allows you to use Solid Edge offline on another machine during this period, such as from a home-working machine. For instance, for 5 licenses, you would be entitled to 5 home-use licenses.

After the 6 months are over, you can renew the license again for another 6 months and can continue doing this so long as you have a valid maintenance contract.

Please note that home-use licenses will incur a watermark on any drawings that are exported using the license. The home-use license is not intended for production use, so you should refer to your full Solid Edge license to export drawings without a watermark.

Please also note that this license does not entitle you to use your Solid Edge software abroad, and you must use a Solid Edge travel license to do this. Please refer to the Solid Edge travel license guide on how to create a travel license if this is required.

## 2. Prerequisites

Below is a list of prerequisites for this guide:

- A full Solid Edge license with Home-Use.
- A valid maintenance contract.
- Solid Edge 2020 software installed on your machine.
- Siemens WebKey account access (see below)
- Internet access.

This guide assumes you, or someone at your organisation, has access to a Siemens WebKey account.

If you do not have a Siemens WebKey account or do not have access, please refer to our guide on how to set up WebKey access.

Please note that the content of this guide is written for Solid Edge 2020 only, although the process is very similar to previous versions.

3. Guide Contents

- 1. Firstly, with Solid Edge installed, launch License Utility from the Windows Start menu.

You will find this under 'Solid Edge #### → License Utility'.

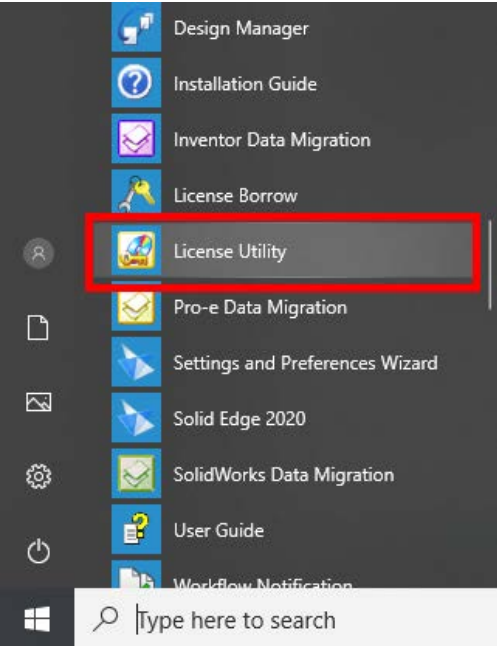


Figure 1 - Example of Windows Start menu, showing the license utility application icon.

- 2. The License Utility application should launch, displaying a dialog akin to the one below.

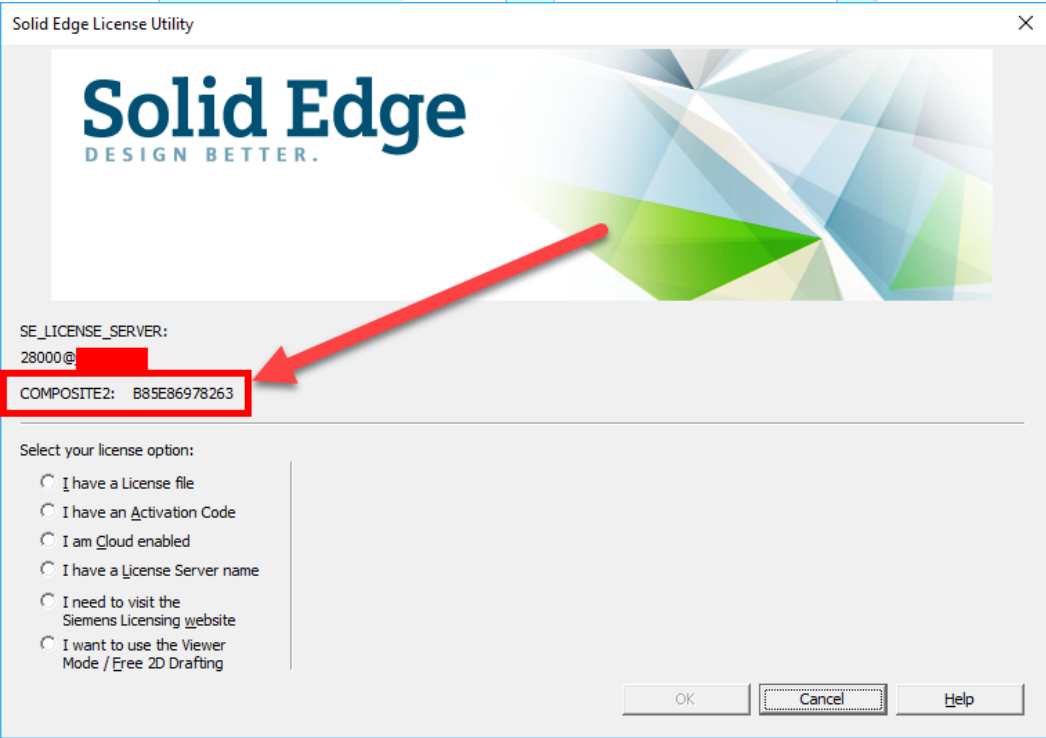


Figure 2 - Screenshot of the Solid Edge License Utility application.

3. On this dialog, you should see a label for 'COMPOSITE2' with a corresponding 12-character code.

**Make a note of this code, as you will need it later.**

The text is selectable, we recommend copying the code to the clipboard and pasting it somewhere for later.

Please note that this code is based upon several elements of your hardware, such as your MAC address, hard-drive serial number and computer hostname. If any of these factors change, this code will change, and your license will invalidate.

4. Visit the Siemens WebKey login site, or click the link [here](#), and login with your details.

If you do not have a WebKey account, please refer to the prerequisites section of this guide on how to obtain one.

5. Upon logging in, this should take you to your WebKey homepage. Click **Passwords and License Files**.

6. Choose 'Solid Edge' for the product and choose '220.0 (Home)' for the version.

7. Tick the 'Select' box for the license type you wish to issue the license for.

Description	Qty. Avail.	Qty. Active	Select
Solid Edge Classic	1	0	<input checked="" type="checkbox"/>

Figure 3 - Screenshot from WebKey for choosing a license.

8. Enter the following information into the fields that you are prompted for.

Personal Details – enter your personal details.

“Email Address” – the address you wish the license to be sent to.

“SE CID” – the 'COMPOSITE2' address we captured earlier from license utility (step 3).

9. Click 'Generate License'.

The following page should allow you to download the license straight away, but you will also be emailed a copy of the license in case you lose it.

The license may take some time to come through, please allow up to an hour for the email to come through. Also ensure to check your spam mailbox in case the automated email has been filtered out.

10. Launch License Utility again (follow steps 1 & 2 again if you are not sure).

11. Choose 'I have a license file' and browse to the license file.

12. Launch Solid Edge.

Solid Edge should launch if the license has been correctly assigned and set. You should also see a dialog prompting you how many days you have left on your temporary license.

If you have any issues, please refer to our contact details on Section 4 of this guide.

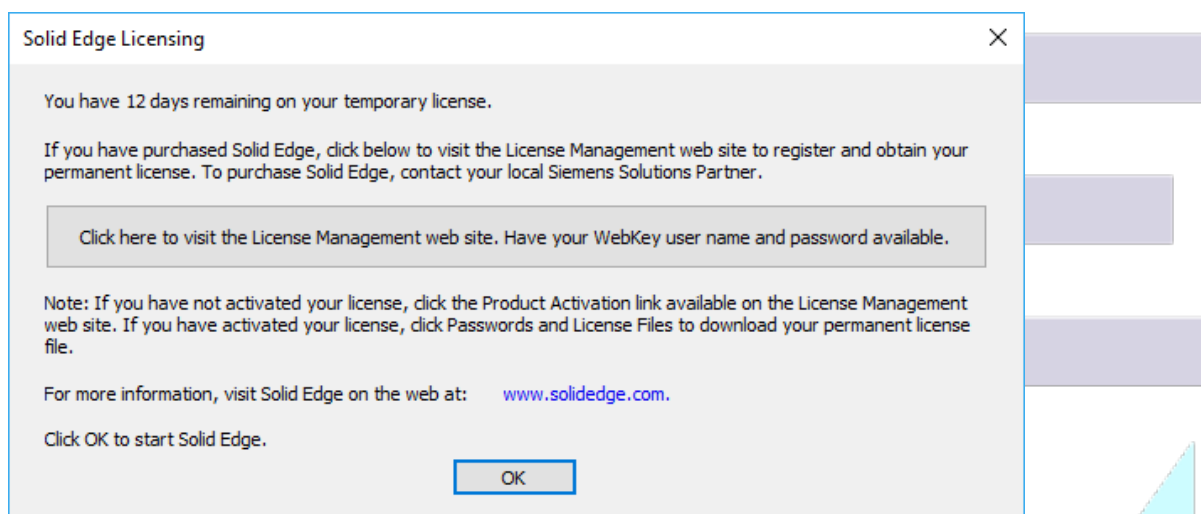


Figure 4 - Solid Edge temporary license reminder.

4. Contact OnePLM

Have a question or need technical support? No problem, our team of technical experts are on hand. Please include as many details as possible so that we can assist you.

4.1. Technical Support – Contact Details

For technical enquiries, please contact our helpdesk through one of the following methods:

Email: [Support@OnePLM.com](mailto:Support@OnePLM.com)

Tel: [01865 954 301](tel:01865954301)

Website: [OnePLM.com/Contact](http://OnePLM.com/Contact)

4.2. Sales – Contact Details

For sales enquiries, please contact us through one of the following methods:

Email: [Sales@OnePLM.com](mailto:Sales@OnePLM.com)

Tel: [01865 954 300](tel:01865954300)

Website: [OnePLM.com/Contact](http://OnePLM.com/Contact)



Revision History

Rev	Author	Date	Notes
1	JSTA	19/03/2020	First release