

NX License Borrowing

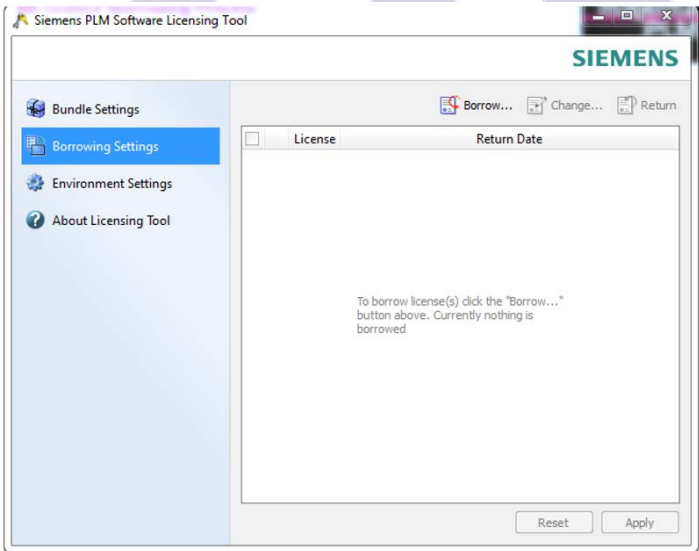
The NX licence borrow utility allows a user to borrow a licence from the server for up to 90 days. The client machine can disconnect from the server for this period and work independently.

1. Connect the client machine to the network and confirm that NX launches without issue. (Confirm that the relevant licence bundle has been added via “Start->All Programs->Siemens NX*->Licencing Tools->Licencing Tool->Bundle Settings).

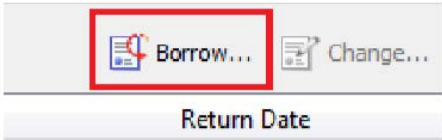
2. Close NX

3. Launch the licencing Tool

Start->All Programs->Siemens NX*->Licencing Tools->Licencing Tool

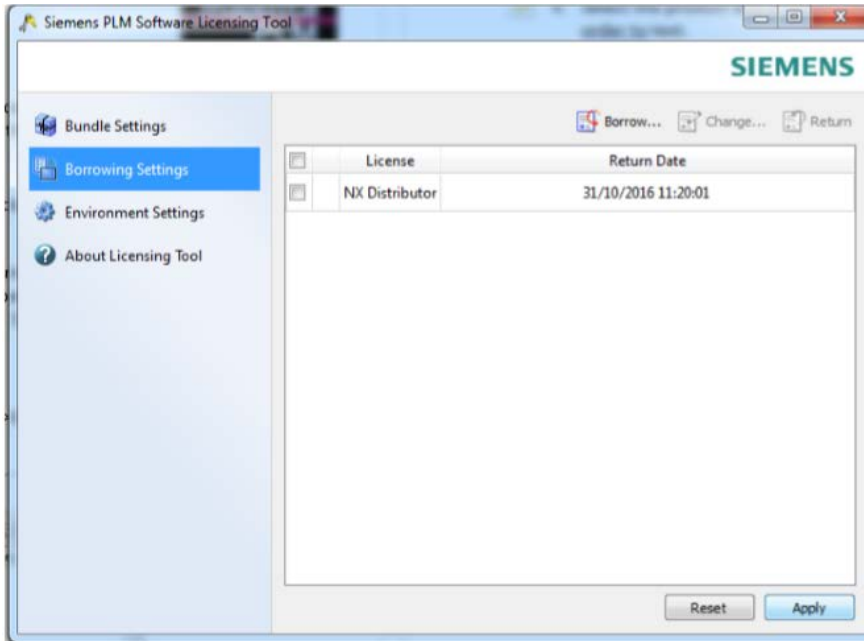


4. Select the “Borrow” button.



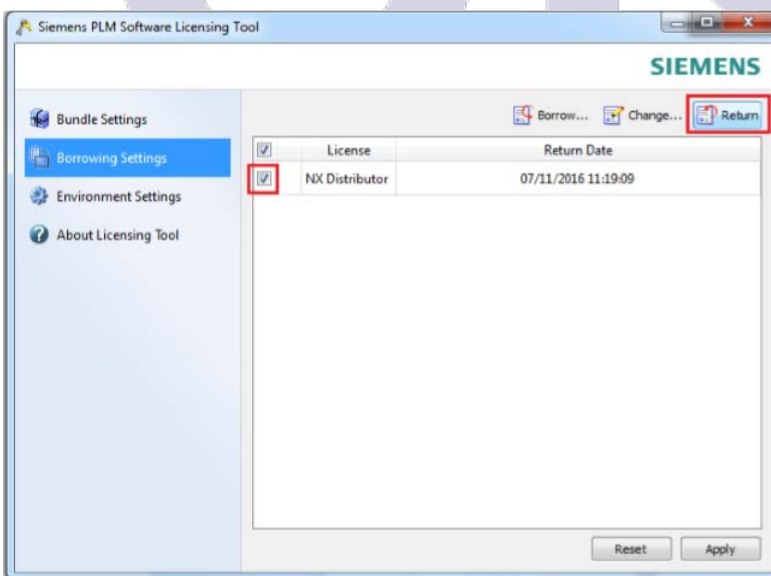
5. Select the product and a return date.

7. Check the settings and “Apply” the borrow mechanism.



7. Disconnect from the network and attempt to launch NX.

8. You can return the licence earlier if required by connecting to the network and select the option to return.



Alternatively, the licence will expire from the client at the given time and will return to the server.

Please note: The user who borrows the licences must be the user who intends to use the software. (The user's registry keys are populated with a licence code).